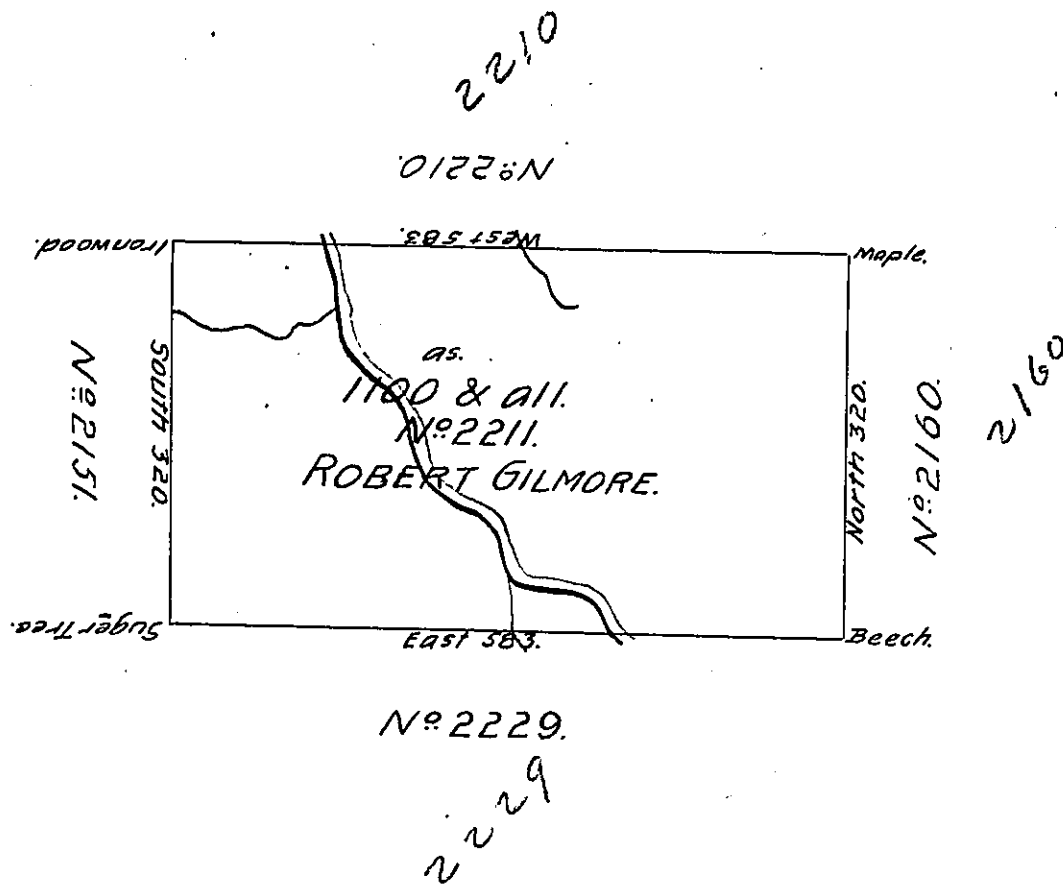


N^o 68.



Situate on a Branch of the Oswage Creek about four Miles South of the State Line
 in North^d. County containing 1100 Acres and the Usual Allowance for Roads &c.
 Surveyed June 19th 1793 for Robert Gilmore in perseverance of a Warrant N^o
 2211-bearing date 12th December 1792.

John Cavan D. S.

Daniel Brodhead Esq. S. G.

IN TESTIMONY that the above is a copy of the original remaining on file in
 the Department of Internal Affairs of Pennsylvania, made
 conformably to an Act of Assembly approved the 16th day of
 February, 1833, I have hereunto set my Hand and caused
 the Seal of said Department to be affixed at Harrisburg,
 this fourth day of November 1904.

Loac D. Brown
 Secretary of Internal Affairs.